

UF | BIOMEDICAL ENGINEERING PRIMARY FACULTY



Kyle D. Allen

Assistant Professor & Associate Chair for Undergraduate Studies
Ph.D., Rice University

Novel strategies to diagnose and treat degenerative joint diseases



David E. Hintenlang

Associate Professor & Medical Physics Program Director
Ph.D., Brown University

Real-time characterization and optimization of radiation dosimetry for therapy and imaging



Parisa Rashidi

Assistant Professor
Ph.D., Washington State University

Machine learning, data mining, big data, biomedical/health informatics and gerontechnology



Stephen H. Arce

Lecturer & ABET Coordinator
Ph.D., University of Florida

Bioinstrumentation, biodesign and BME senior design laboratories



Gregory A. Hudalla

Assistant Professor
Ph.D., University of Wisconsin

Nanomaterials engineered to direct immune responses for disease prophylaxis, implants and immunotherapies



Carlos Rinaldi

Charles A. Stokes Term Professor & Senior Associate Chair
Ph.D., Massachusetts Institute of Technology

Nanomedicine, transport phenomena, cancer nanotechnology and magnetic nanoparticles



Wesley E. Bolch

Professor & Associate Dean for Academic Affairs
Ph.D., University of Florida

Dosimetry, computational medical physics and dose assessment



Huabei Jiang

Pruitt Family Professor
Ph.D., Dartmouth College

Optical, fluorescence and photoacoustic tomography and microscopy



Christine E. Schmidt

Pruitt Family Professor & Department Chair
Ph.D., University of Illinois

Biomaterials for neural tissue regeneration and neural interfacing



Mingzhou Ding

Pruitt Family Professor & UFRF Professorship
Ph.D., University of Maryland

Cognitive neuroscience, signal processing and neural imaging



Benjamin G. Keselowsky

Associate Professor & UFRF Professorship
Ph.D., Georgia Institute of Technology

Biomaterials, controlled release and immunotherapies



Blanka Sharma

Assistant Professor
Ph.D., Johns Hopkins University

Nanomedicine, stem cells, biomaterials, tissue engineering and targeted drug/gene delivery



Jon Dobson

Professor
Ph.D., Swiss Federal Institute of Technology, ETH-Zurich

Magnetic micro- and nanoparticle-based biomedical applications



Peter S. McFetridge

Associate Professor & Tim Brahm Term Professorship
Ph.D., University of Bath

Naturally inspired biomaterials for implants and regeneration



Cherie Stabler

Associate Professor & Associate Chair for Graduate Studies
Ph.D., Georgia Institute of Technology

Biomaterials, controlled release, regenerative medicine & diabetes



David R. Gilland

Associate Professor & Undergraduate Coordinator
Ph.D., University of North Carolina

Molecular imaging, instrumentation and algorithm development using PET and SPECT



Brandi K. Ormerod

Associate Professor & Director, BME Graduate Student Diversity & Professional Development
Ph.D., University of British Columbia

Engineered stem cell and immunomodulatory strategies for brain repair and aging studies



Hans van Oostrom

Associate Professor & Director, Institute for Excellence in Engineering Education
Ph.D., Eindhoven University of Technology

Human physiologic simulation and education



Aysegul Gunduz

Assistant Professor
Ph.D., University of Florida

Human brain mapping and neurological disorders



Kevin J. Otto

Associate Professor
Ph.D., Arizona State University

Neural engineering, device-tissue interfaces and neurostimulation



Lin Yang

Associate Professor
Ph.D., Rutgers University

Imaging informatics, biomedical image analysis, machine learning, computer vision and computer aided diagnosis

J. Crayton Pruitt Family

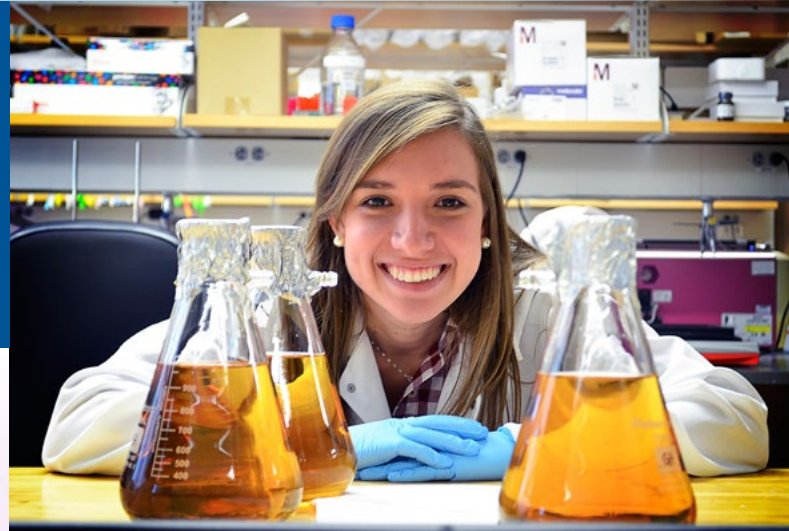
Department of Biomedical Engineering

EXCELLENCE IN BIOMEDICAL ENGINEERING EDUCATION & RESEARCH TO IMPROVE HUMAN HEALTH

The Department of Biomedical Engineering at the University of Florida is made possible by the vision and generosity of Dr. J. Crayton Pruitt and his family.

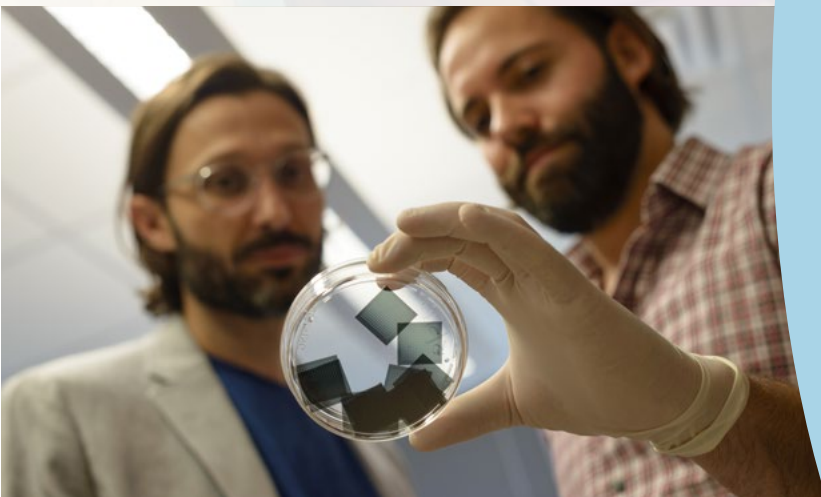
Since its inception in 2002, the department continues to excel in interdisciplinary research that merges engineering with biology and medicine. The department offers both a graduate program and an undergraduate program with particular strengths in:

- Neural Engineering
- Imaging & Medical Physics
- Biomaterials & Regenerative Medicine
- Biomedical Informatics & Modeling



DID YOU KNOW?

- UF BME research has driven the **clinical translation of technologies** that improve thousands of lives globally.
- UF BME is one of only a few departments in the nation to be **co-localized with a top-ranked medical school**, veterinary school and dental school.
- UF BME is housed in a **state-of-the-art building** located next to the Health Science Center, hospital complex and steps from engineering.
- UF BME partners with many local **research centers and institutes** including the McKnight Brain Institute, the Clinical and Translational Science Institute, the National Magnetic Field Laboratory and the Malcolm Randall VA Medical Center.
- UF BME has access to outstanding resources for **entrepreneurship and commercialization**, including Florida's 40-acre Innovation Square and the internationally ranked Sid Martin Biotechnology Incubator.



UF UNIVERSITY of
FLORIDA

J. Crayton Pruitt Family Department of
Biomedical Engineering

Biomedical Sciences Building JG56
1275 Center Drive, PO Box 116131
Gainesville, FL 32611

ENGINEERS *for* LIFE.

Phone: 352.273.9222
Website: BME.UFL.EDU